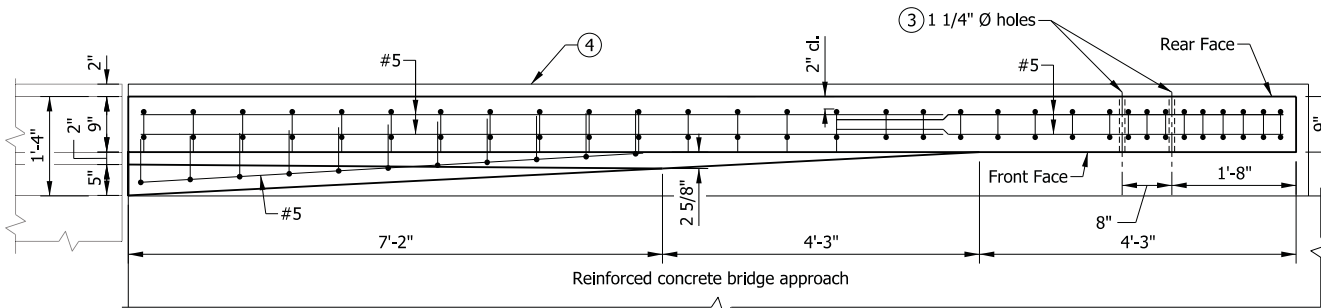


ELEVATION



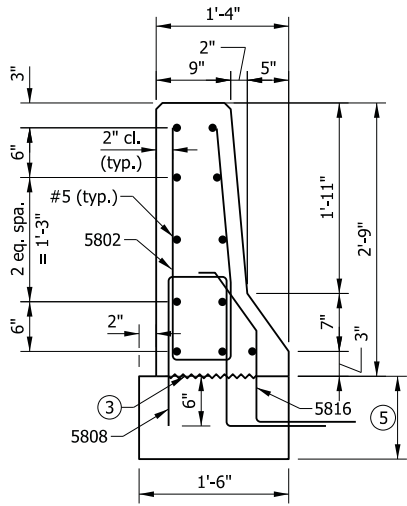
PLAN

NOTES

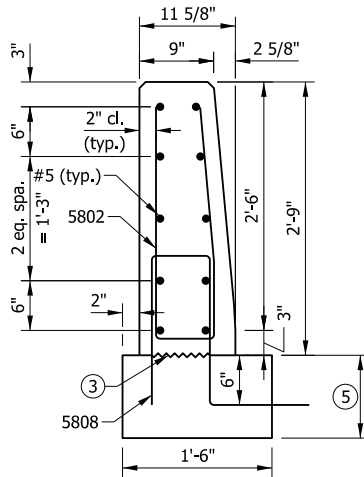
1. See Sheet 2 for sections.
2. See Sheet 3 for reinforcing-bar diagrams and bill of materials.
- ③ Holes for attachment of guardrail transition type TGB. See Standard Drawing E 706-CBRT-04 for details.
- ④ RCBA extension for bridge railing transition type TFC. See Standard Drawing E 609-TBAE-01 for details.

INDIANA DEPARTMENT OF TRANSPORTATION

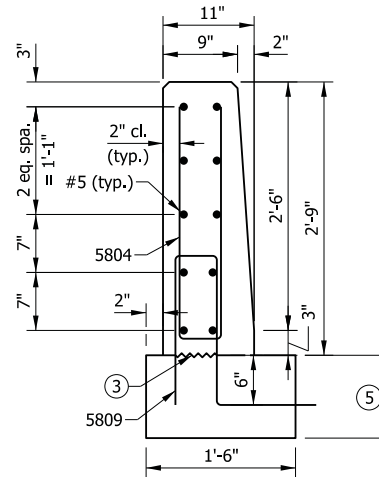
CONCRETE BRIDGE RAILING
TRANSITION TFC
PLAN AND ELEVATION



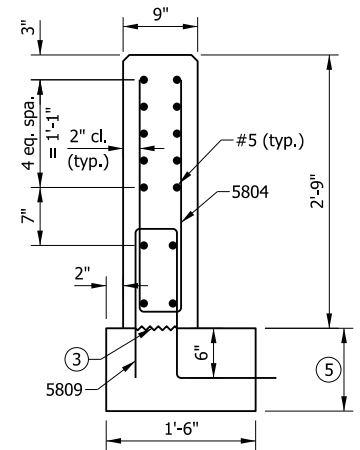
SECTION A-A



SECTION B-B



SECTION C-C



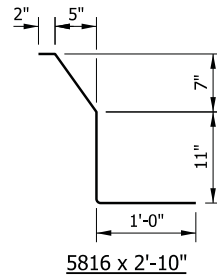
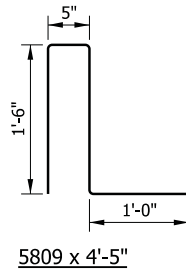
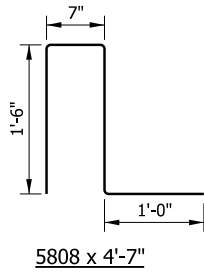
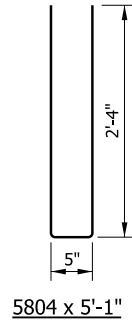
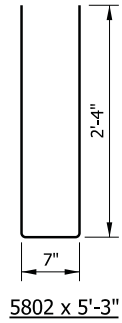
SECTION D-D

NOTES

1. See Sheet 1 for elevation and plan.
2. All chamfered edges shall be 3/4".
- ③ Construction joint type A. See Standard Drawing E 702-CJTA-01 for details.
4. See Sheet 3 for reinforcing-bar diagrams.
- ⑤ RCBA extension for bridge railing type TFC. See Standard Drawing E 609-TBAE-01 for details.

INDIANA DEPARTMENT OF TRANSPORTATION

CONCRETE BRIDGE RAILING
TRANSITION, TFC
SECTIONS



NOTE

- See Standard Drawing E 703-BRST-01 for reinforcing-bar bending details and notes.

BILL OF MATERIALS			
Quantities are for one concrete bridge railing transition type TFC			
EPOXY-COATED REINFORCING STEEL			
MARK OR SIZE	NO. OF BARS	LENGTH	WEIGHT
5802	12	5'-3"	
5804	19	5'-1"	
5808	12	4'-7"	
5809	19	4'-5"	
5816	11	2'-10"	
#5	10	10'-9"	
#5	1	6'-9"	
#5	14	6'-0"	
Total Epoxy-Coated Reinforcing Steel			551 LBS
MISCELLANEOUS			
Concrete, Class C			1.2 CYS
Surface Seal			100 SFT

INDIANA DEPARTMENT OF TRANSPORTATION

CONCRETE BRIDGE RAILING
TRANSITION, TFC